



TDMoEA Interface Card for Loop-AM3440 Series

Features

- Hot pluggable interface card for AM3440-A/B/C series
- Four Ethernet ports for WAN or LAN port assignment
 - Bandwidth up to 4 x 2 M and support N x 64K bps
 - Two combo Gigabit Ethernet (GbE) with 2 RJ45 and 2 SFP housing
 - Two 10/100/1000 BaseT Ethernet
- Jumbo Frame reaches up to 10K bytes
- MAC learning (max MAC table 2710 entries)
- Max 340ms Packet Delay Variation
- Port transmission delay measurement
- L2 switching
 - Maximum 16 concurrent VLAN Groups
 - Support C-VLAN/S-VLAN tag adding and removing on Pseudowire
 - Support 802.1q Port-Based VLAN on Ethernet Port
 - Support Q-in-Q
 - Support 802.1D STP, 802.1s MSTP*, 802.1w RSTP
- QoS
 - User configurable CoS
 - User configurable ToS in outgoing IP frames
- Jitter & Wander
 - PPM per G.823 Traffic
- Link Aggregation
- Support 1 + 1 protection with QE1/T1
- Support 1 : 1 port protection
- Support Heart Beating Protection
- Pseudowire protocols
 - SAToP
 - CESoPSN
 - MEF-8 (CESoETH)
- RoHS compliant



Description

The TDMoEA plug-in card is designed for the Loop-AM3440-A/B/C. This card is used to transport TDM (time division multiplexed) traffic over the IP network in addition to normal Ethernet traffic. As the communications network migrates from TDM to IP, the TDMoEA card provides a flexible and cost effective choice for the transport of legacy TDM signals.

There are four Ethernet ports with no limitation for WAN or LAN port assignment The TDMoEA card support point-to-point and point-to-multi-point voice and data application. It also supports 1 + 1 and 1 : 1 protection. Furthermore, the TDMoEA card of the AM3440 can work with IP67xx family and with TDMoEA* card of O9500R.

Ordering Information

To specify options, choose from the list below:

Note: RoHS compliant units are identified by the letter **G** appearing at the end of the ordering code.

Model (RoHS compliant)	Description	Notes
Loop-AM3440-TDMoEA-PPM-G	TDMoEA card with 2 GbE combo interfaces and 2 Ethernet interfaces (10/100/1000BaseT) plug-in module Support G.823 Traffic SFP optical module is not included.	For CHA, CHAJ, CHAK, CHB, CHC and CHCJ only. Please order separately for SFP optical modules from SFP optical brochure.

Accessories

User's Manual

Loop-AM3440-TDMoEA-UM	User's Manual (paper copy). Note: A CD version of the manual is already included as standard package.
-----------------------	-----------------------------------------------------------------------------------------------------------------

SFP Optical Modules

Please place your order using the 5-digit alphanumeric codes listed in the separate SFP Optical Module Brochure.

TDMoEA for Loop-AM3440 Series Product Specifications

[SFP Optical Module Characteristics \(Please refer to SFP optical module brochure for details\)](#)

[Combo Gigabit Ethernet \(GbE\) Interface](#)

Number of Ports	2
Speed	10/100/1000M bps
Connector	RJ45 for twisted pair GbE, LC for optical GbE, auto detection

[Gigabit Ethernet \(GbE\) Interface](#)

Number of Port	2
Speed	10/100/1000 BaseT
Connector	RJ45

[Ethernet Function](#)

Basic Features	MDI/MDIX for 10/100/1000M BaseT auto-sensing Ping function contained ARP
Packet Transparency	Packet transparency support for all types of packet types including IEEE 802.1q VLAN and 802.1ad (Q-in-Q)
QoS	User configurable 802.1p CoS, ToS in out going IP frame
Traffic Control	Ingress packet Rate limiting buckets per port for Ethernet port Supporting Rate-based and Priority-based rate limiting for LAN port Granularity: <ul style="list-style-type: none"> a. From 64 Kbps to 1 Mbps in increments of 64 Kbps b. From 1 Mbps to 100 Mbps in increments of 1 Mbps c. From 100 Mbps to 1000 Mbps in increments of 10Mbps
	Pause frame issued when the traffic exceeding the limited rate before packet dropped following IEEE802.3X
Link Aggregation	WAN supports Link Aggregation

[Jitter & Wander](#)

PPM: per G.823 Traffic

*Standards Compliance***IEEE**

802.1d	MAC Table Learning and STP
802.1p	Priority Code Point
802.1q	VLAN
802.1s	MSTP*
802.1w	RSTP
802.1ad	Tag Stacking (Q-in-Q)
802.3ad	Link Aggregation

IETF

RFC2236	IGMP Snooping v2*
RFC2495	E1/T1 OAM
RFC 4553	SAToP
RFC 5086	CESoPSN

MEF

8	CESoETH
---	---------

ITU

G.823/G.824	Traffic Interface
-------------	-------------------

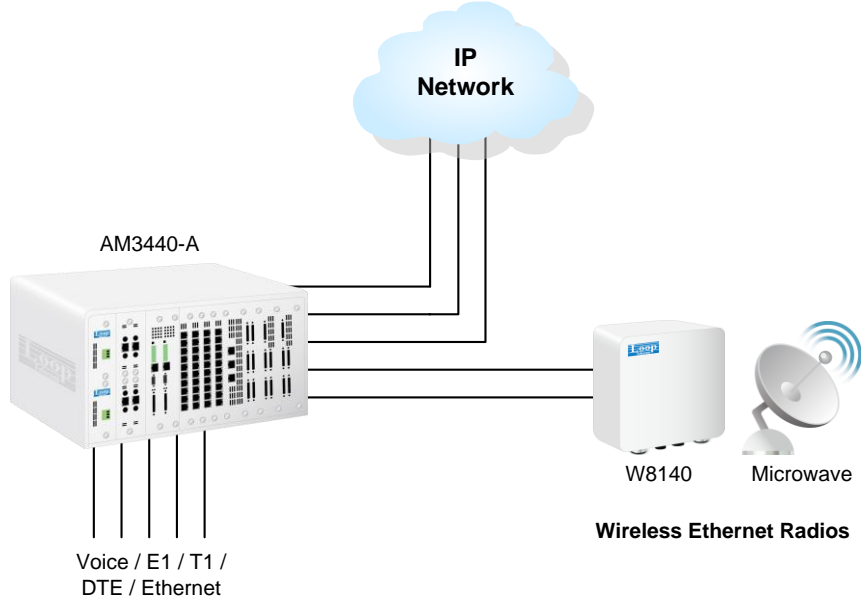
Certifications

EMC	EN55022 Class A, EN50024, FCC Part 15 Subpart B Class A
Safety	EN60950-1(CE)

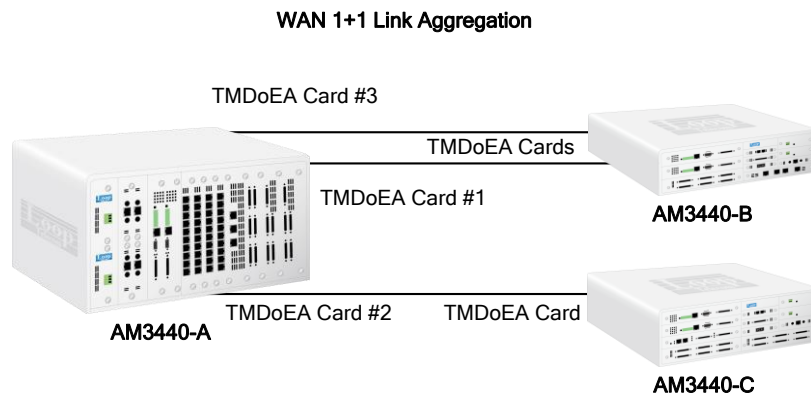
* Future option

Application Illustrations

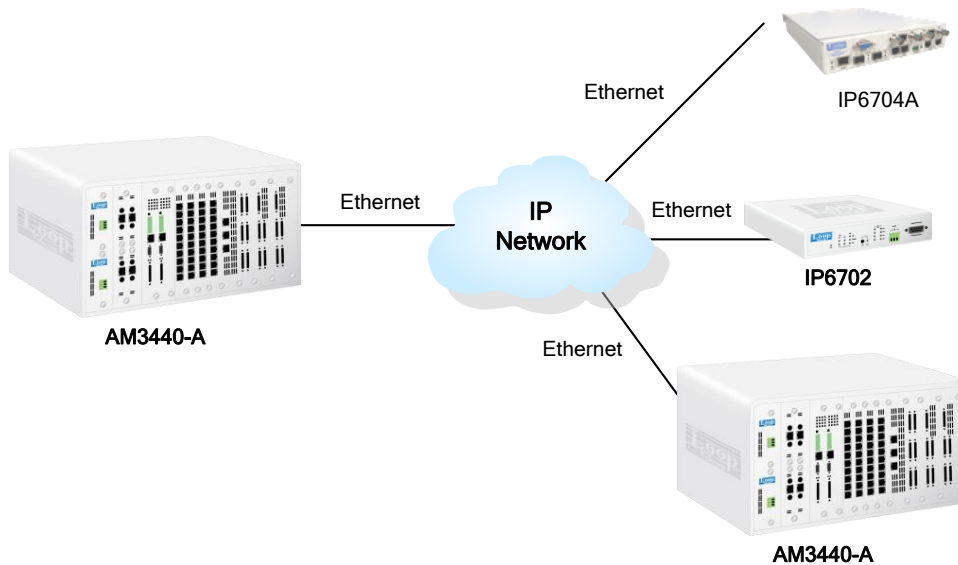
The TDMoEA plug-in card transforms TDM traffic (voice signals/E1/ T1/ DTEs/ Ethernet) into IP Traffic



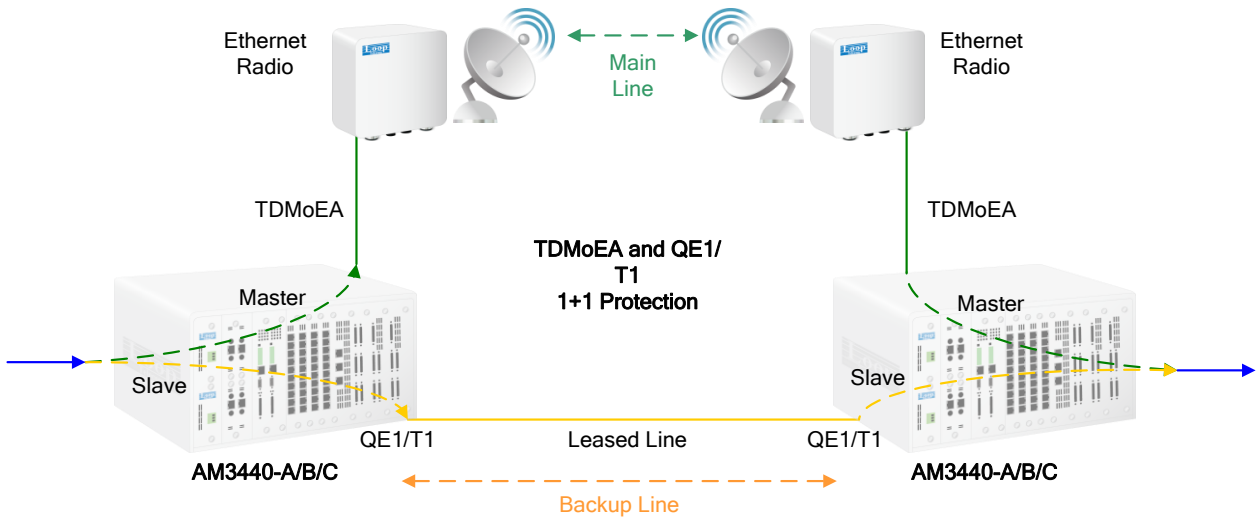
Point to Point Application



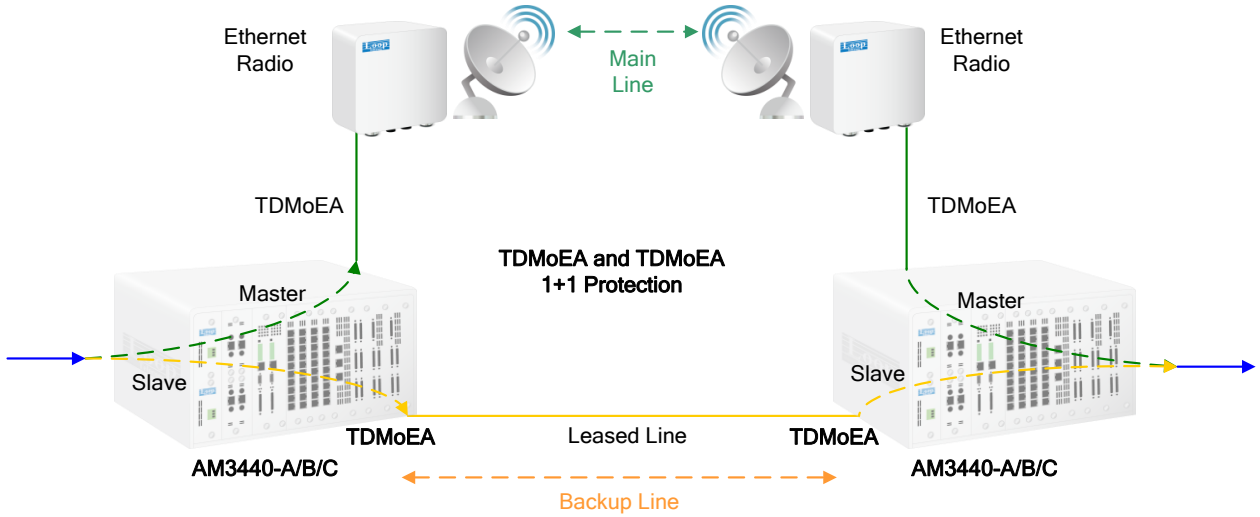
Point to Multi-Point Application



Ethernet and QE1/T1 Protection

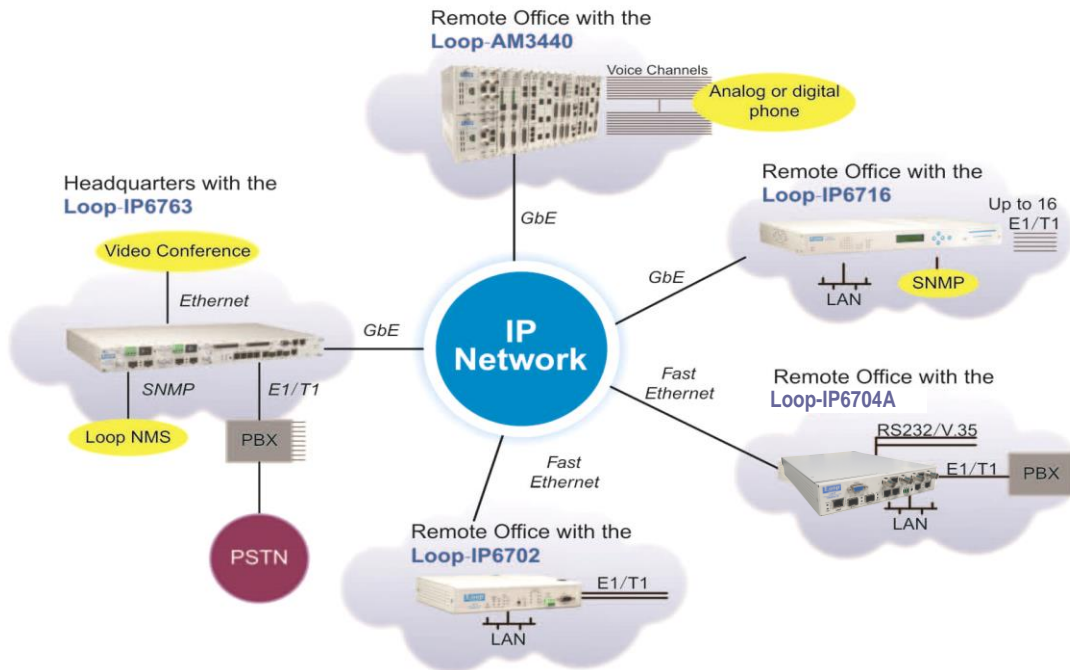


TDMoEA and TDMoEA Protection

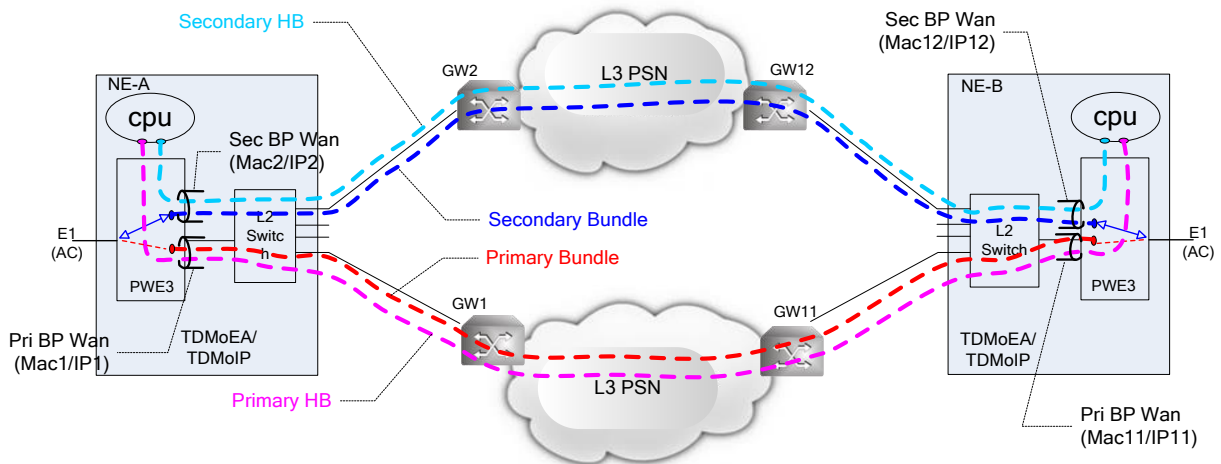


VPN Corporate Private Network

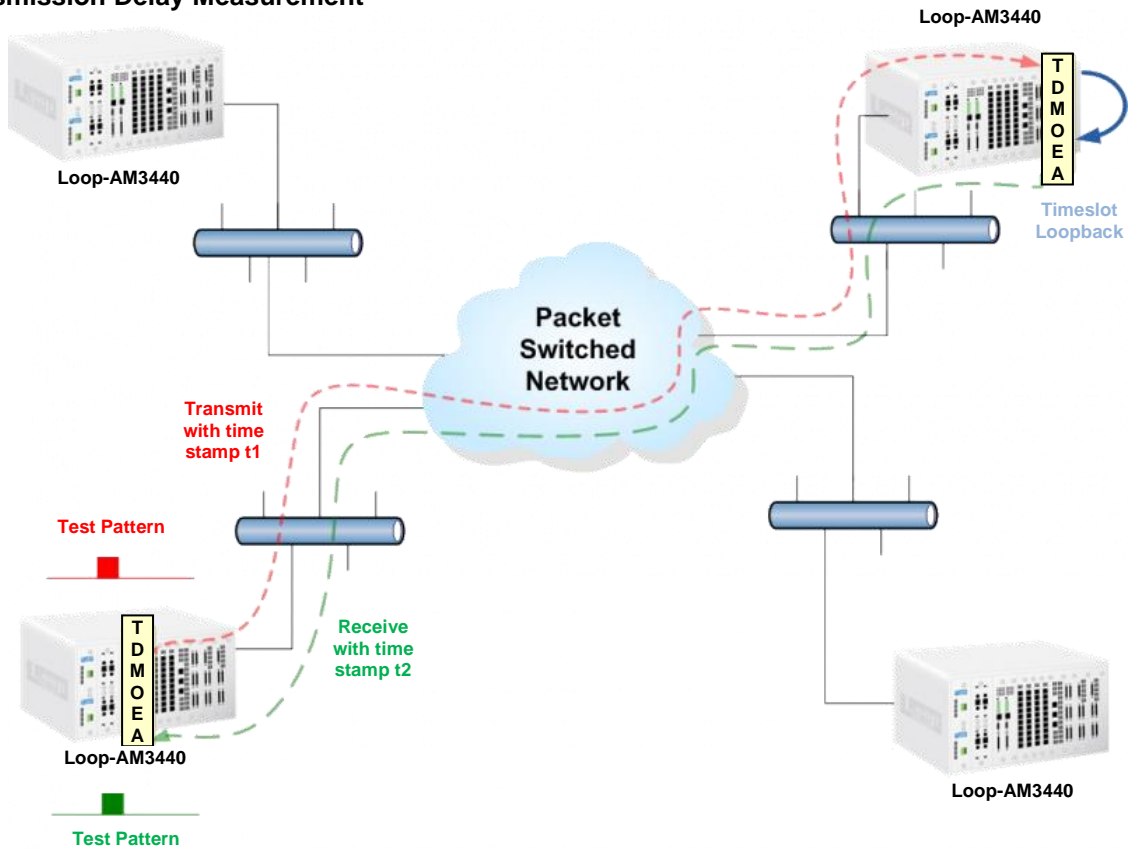
For a company that needs a Virtual Corporate Private Network to connect remote branches to company headquarters, the Loop TDMoEA line of products can create an E1/T1 lease line for faster connections.



Heart Beating Protection



Transmission Delay Measurement



Data Comm for Business, Inc.
 2949 CR 1000 E
 Dewey, IL 61840
 Voice 8004DCBNET (800.432.2638)
 Fax 217.897.1331
 Info www.dcbnet.com/contact.html
 Web www.dcbnet.com